

## Using Greenleaf CommX 1.1 Trial Version

To install CommX 1.1 on your system, just run Setup. This will install the software and register the control (CommX.ocx) on your computer.

These notes are in addition to the Release Notes and WinHelp documentation included with CommX Trial version. Topics here are:

1. Upgrading to Fully Licensed CommX
2. Need to rebuild applications built with Trial Version
3. Dialogs – Design and Run Time
4. Special Workaround may be required for Visual C++

### Upgrading to Fully Licensed CommX 1.1

Nag dialogs as below will appear at design time and run time unless / until you purchase the fully licensed version of CommX and run Setup again with the serial number which you will be given at the time of purchase.

To obtain the license and Serial Number, call us at 1-800-523-9830 or 972-248-2561, or FAX your order to 972-248-7830. Alternatively you can send email to [CommXRegistration@GreenleafSoftware.com](mailto:CommXRegistration@GreenleafSoftware.com)

Please allow up to 24 hours for processing.

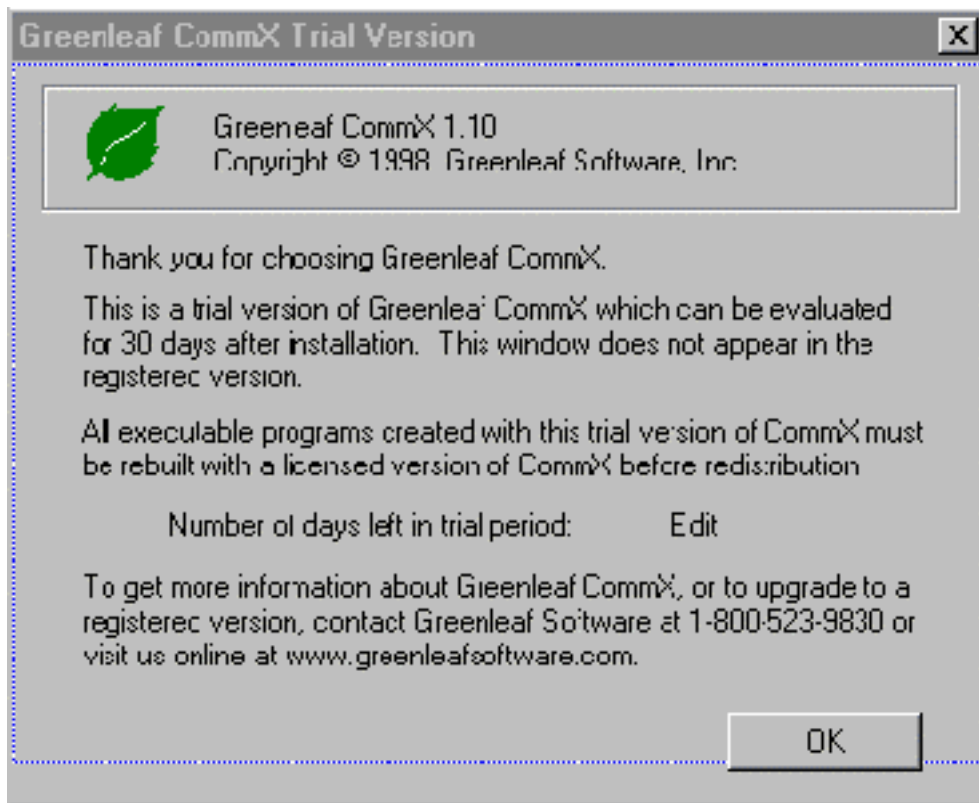
### Need to Rebuild Applications Built with Trial Version

The Trial version contains code that will be removed when you purchase the license or until 30 days have expired (at which time the control will cease to function). This code will cause dialogs to appear at design time and at run time.

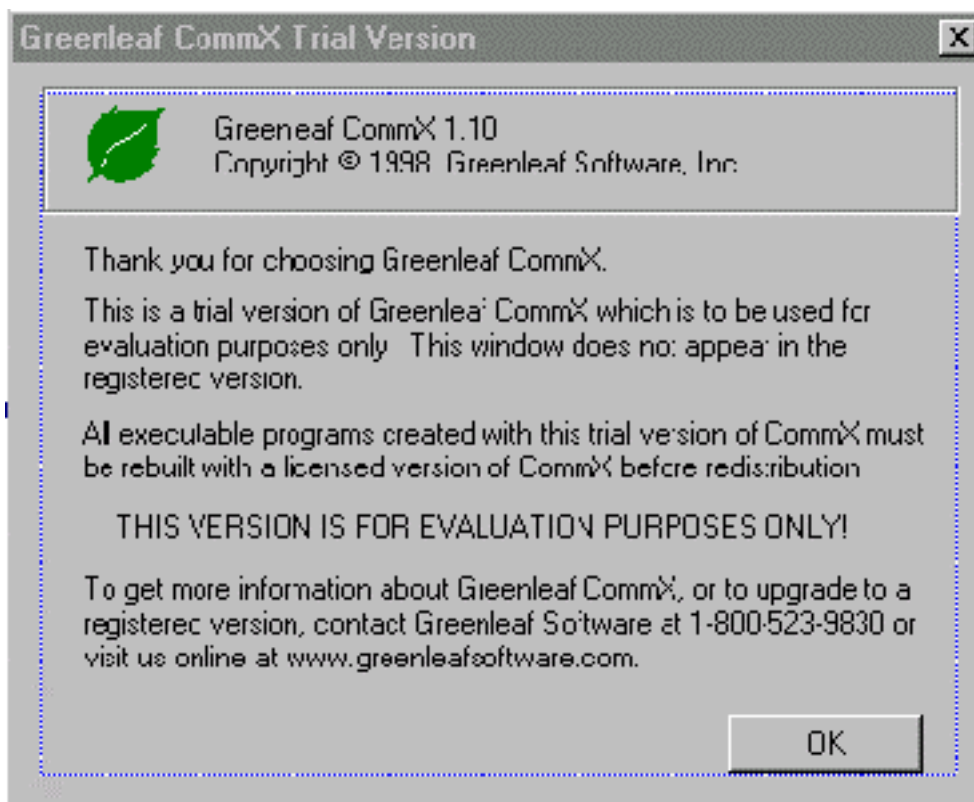
When you obtain the license, run Setup using the supplied Serial Number and the dialogs will no longer appear and the time limit will be removed. (See below for possible need to workaround one problem using with Visual C++).

If you have built and/or distributed applications built with the Trial Version, you will need to rebuild them after obtaining the license.

**This dialog that gets displayed at design time:**



**This dialog that gets displayed at run time**



## **Possible Workaround Using CommX with Visual C++**

If you create an application using CommX Trial Version and Visual C++, then upgrade to the fully licensed version of CommX, you may experience a problem with the PortCtl object at execution time. The PortCtl object may continue to display the splash screen indicating CommX Trial Version is being used.

To work around this problem, install the fully licensed version of CommX. In AppStudio, press the right mouse button and display the properties for the PortCtl object. Make a change to one of the properties, and then change back to its original value. Press OK to accept the changes. A change to the PortCtl object is detected. Save the changes and rebuild the application. When the rebuilt application executes, the splash screen no longer appears and the fully licensed version of CommX is now being used.

1/19/98